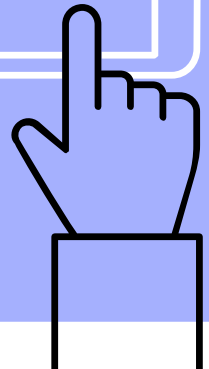
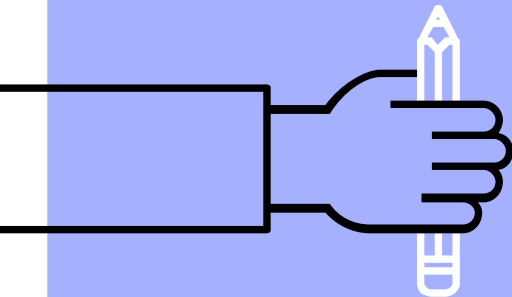
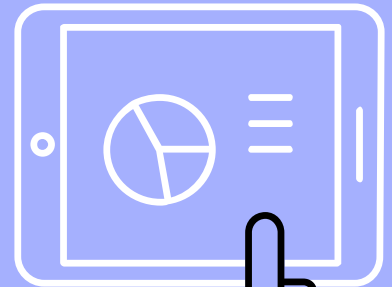
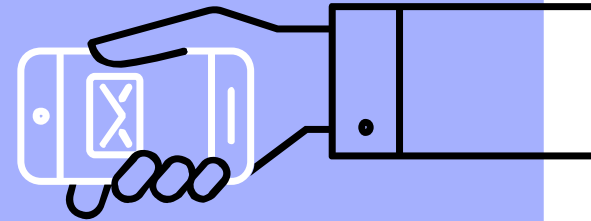
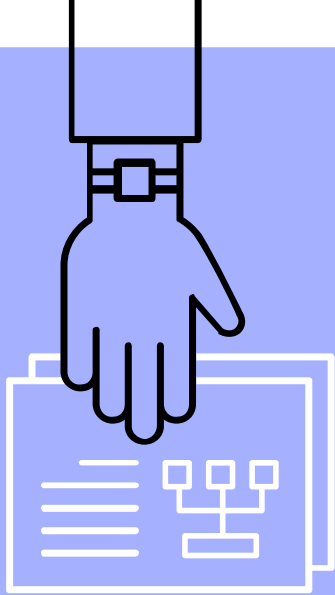


# Learning Target

7th-Grade ELA  
Lesson: April 6, 2020

- ▶ I can read an informational text and make an inference using what I learned.

EQ: How can I make an inference when reading informational text?





Get out a sheet of notebook paper and a pencil and jot down a short response to the following question:

“

*Some hobbies are just to pass the time. Others could lead into a possible job opportunity, or even something greater. Can you think of a hobby you have that could someday lead to a career?*



# Watch

While you watch the video, write down 2-3 different factors that motivated Michael to start his business.



Link to Video: <https://youtu.be/UyI7c8Pf7B4>

Link to [Text Article](#) (watch video OR read article)

# \*Notice

An interview is an example of a nonfiction text we may not consider when we think about types of nonfiction text.

Typically, when we think about nonfiction, we think about scientific articles, history textbooks, and documentaries.



# Remember

In order to make an inference after reading a passage, you must do the following:

1. Read the text closely and carefully.
  - Mark-up the passage with questions, comments, and predictions.
  - Underline important parts of the text.
  - Stop and reread if you get confused.
2. Use information from the reading along with what you already know to make an inference.

# Practice

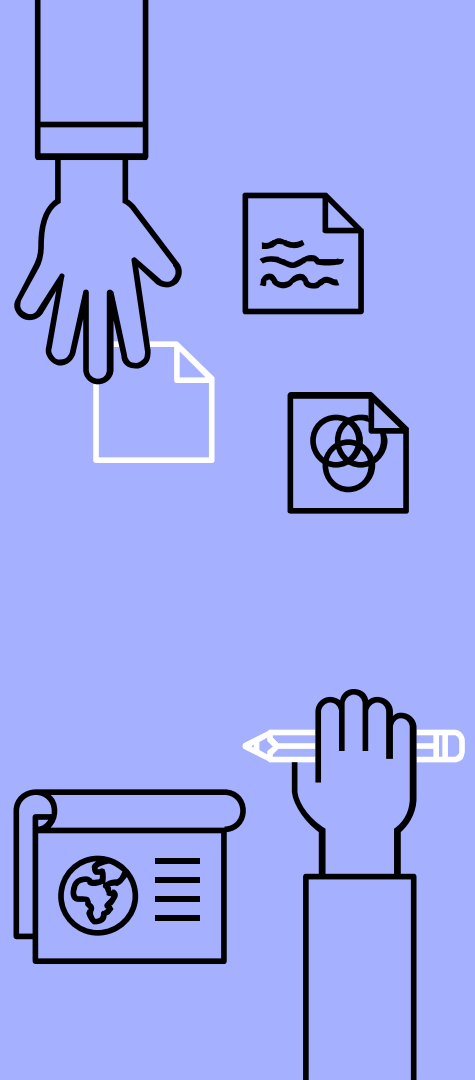
- ★ Choose ONE interview to read and open it in a new tab:
  - [Mike Smith's Story](#)
  - [Carla Lylesound's Story](#)
  
- ★ On notebook paper, answer the questions using what you learned about how to make an inference. Use the RACE Strategy to answer the questions.



# \*RACE Strategy

*Answer questions by citing the text using this strategy.*

1. **R** = **restate** the question
2. **A** = **answer** the question
3. **C** = **cite** evidence from the text
4. **E** = **elaborate** using explanations and examples



# Questions

1. Why do you think the person interviewed chose to turn their hobby into a career?
2. Of the advice given at the end of the article, what do you think is the most important lesson to learn?





# Checking Your Work

The answers to both questions require you to make an inference using your own individual schema (background knowledge), and your answers will vary.

- Check your answers to make sure they meet the following criteria:
  - Did you write in complete sentences?
  - Did you use standard conventions (spelling, punctuation, grammar)?
  - Did you answer the question?
  - Did you support and explain your answer using details from the article?



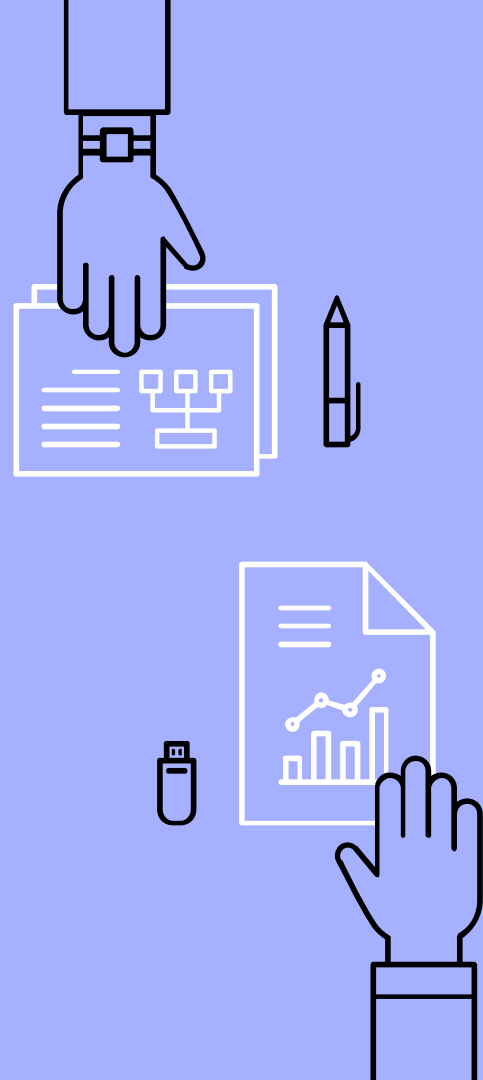
# Checking Your Work

1. Why do you think the person interviewed chose to turn their hobby into a career?

*Remember, this question is asking you to make an inference, so you should have included a piece of evidence from the interview in your response.*

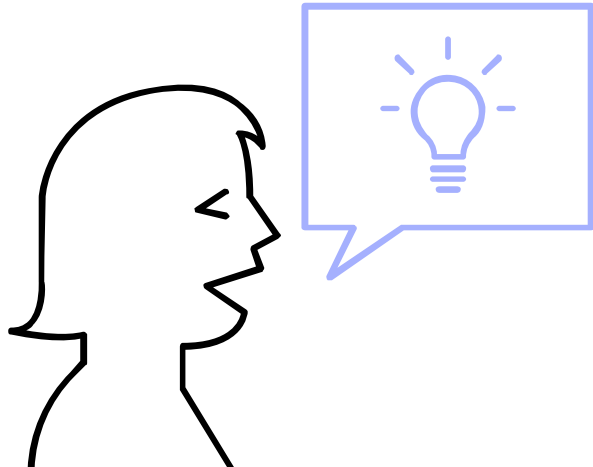
## Example response:

I think Carla chose to turn her hobby into a career when she saw how many greeting cards she was able to sell. In paragraph 4, she wrote, "I knew that I enjoyed creating things that made people smile and that was enough for me. But then the orders began to get larger and larger, and I thought, 'Oh wait, I'm an actual business.'" She waited until she was already making a profit to turn her hobby into her full-time job.



# Additional Resources

YEP-KC is a program for high school students that partners young entrepreneurs with businesses in Kansas City. If this is something you think you might be interested in a few years from now, check out additional information here:



[News Article](#)

[YEP KC About Page](#)